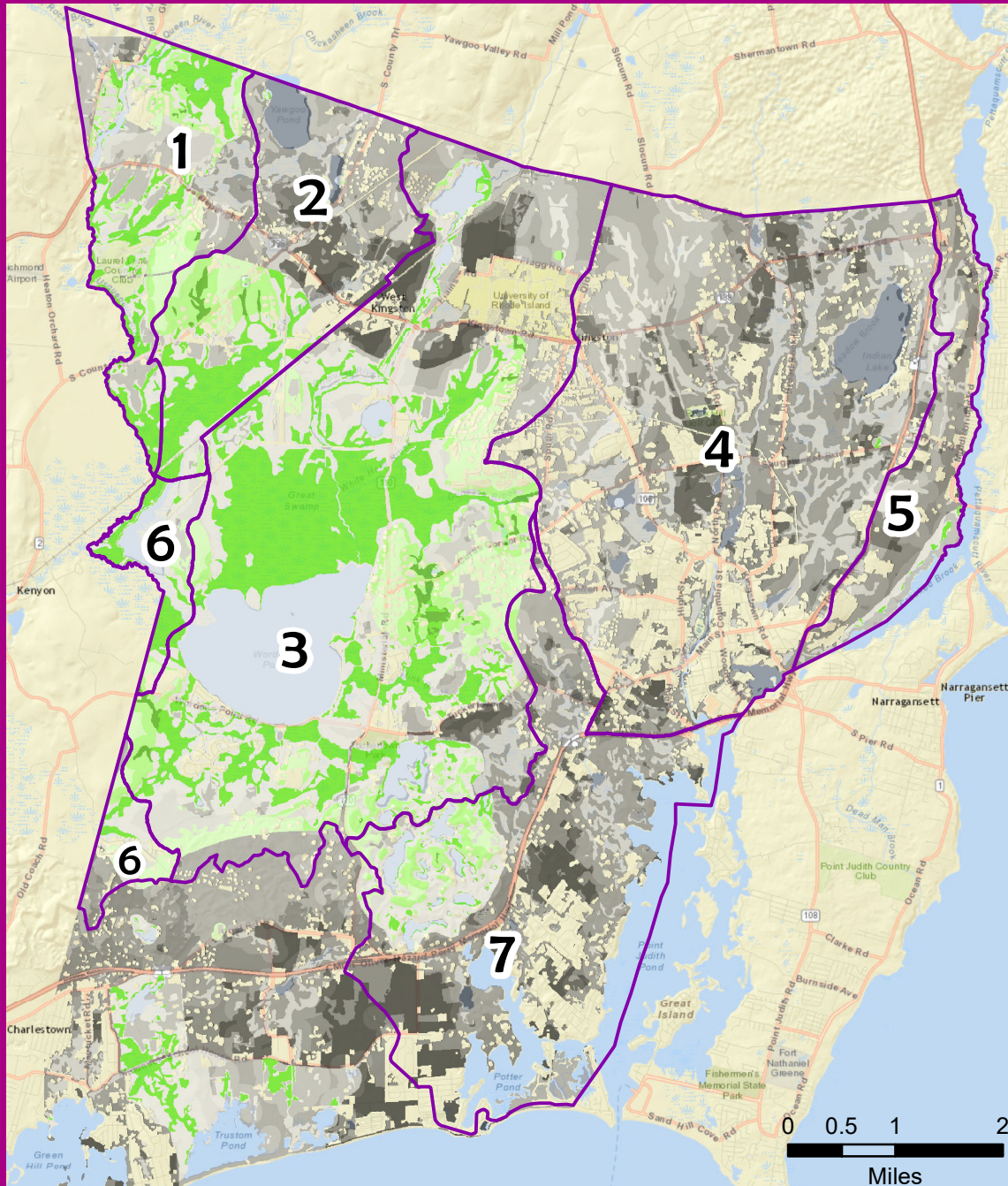
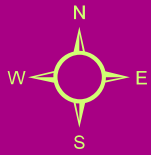
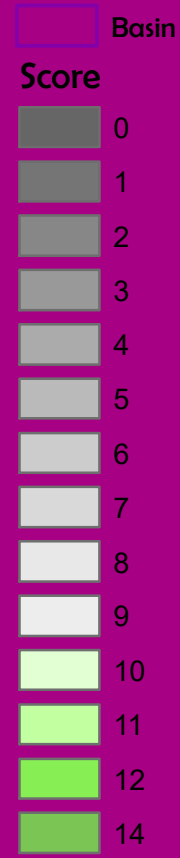


Conservation Planning South Kingstown, Rhode Island



Legend



This map demonstrates areas in South Kingstown, RI that are most suitable for biodiversity conservation.

Areas are scored based on the following criteria:

- Elevation > 125 ft (2 pts)
- Freshwater Wetlands (3 pts)
- Land within 500' of Freshwater Wetlands (1 pt)
- Forest or Brushland (3pts)
- Rare Species Habitat (5 pts)

In addition, all developed areas are excluded.

Areas with scores of 10 or higher are shown in shades of green and encompass a total of 2,469.83 hectares.

In addition, we have calculated the mean (Mn), standard deviation (STD), and total hectares (Ha) of areas with a score of 10 or better for each of the 7 sub-basins in South Kingstown.

Results are as follows:

- (1) Queens: Mn = 8.67, STD = 2.58, Ha = 308.72
- (2) Chickasheen: Mn = 7.02, STD = 3.66, Ha = 307.21
- (3) Chipuxet: Mn = 8.83, STD = 2.95, Ha = 1,514.60
- (4) Saugatucket: Mn = 4.75, STD = 2.03, Ha = 1.37
- (5) Pettaquamscutt: Mn = 5.08, STD = 2.25, Ha = 5.37
- (6) Pawcatuck: Mn = 9.00, STD = 2.27, Ha = 116.89
- (7) Point Judith: Mn = 4.85, STD = 3.25, Ha = 121.26

Author: Azure Giroux
Date: 3/24/2017
Source: URI, USGS, ESRI