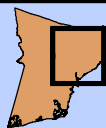
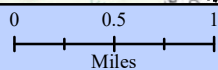
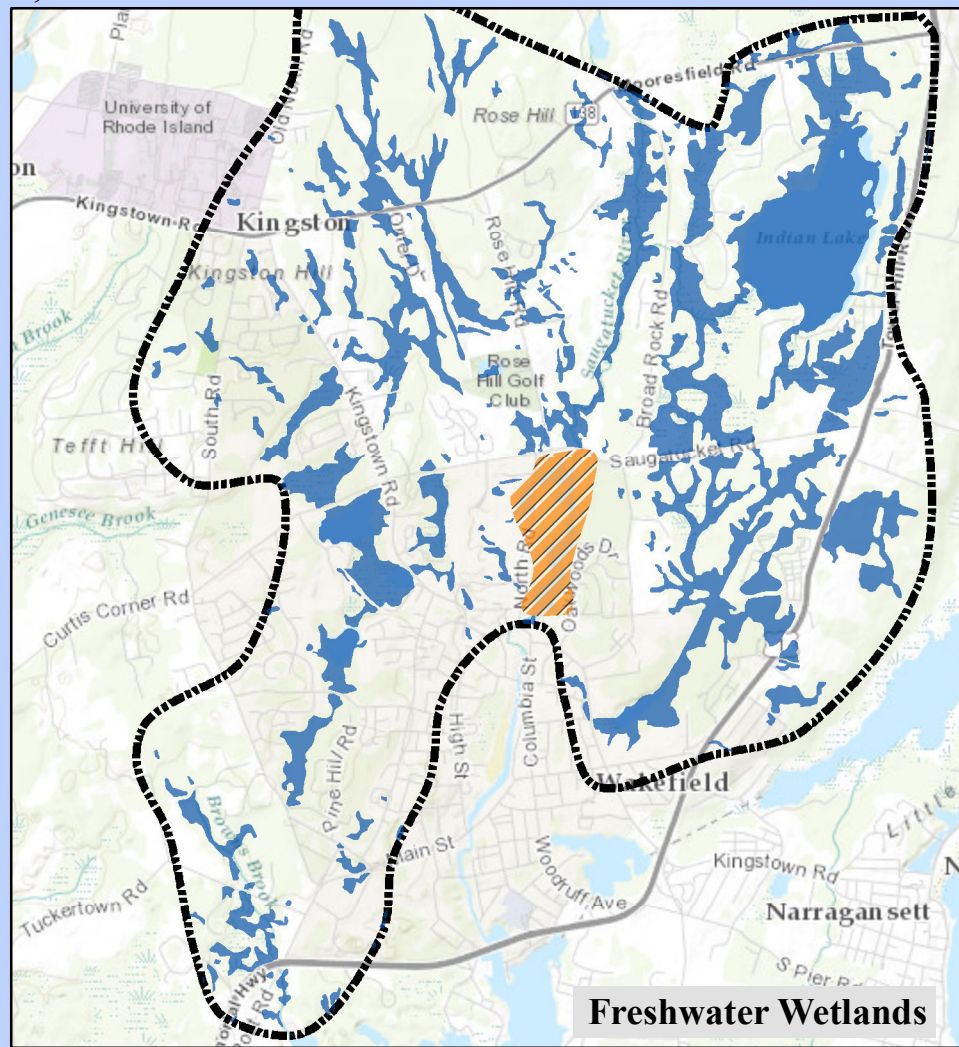
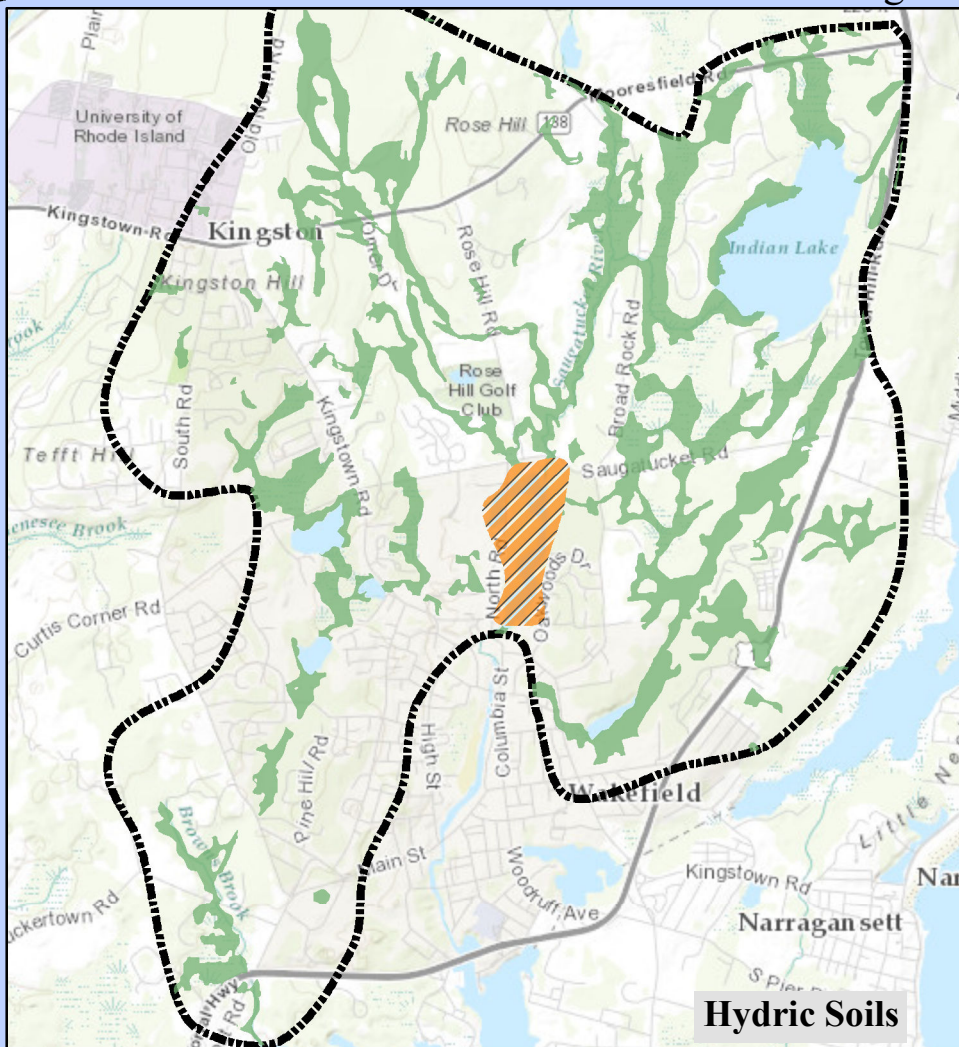


Operation Spray: Mosquito Outbreak Zone

South Kingstown, Rhode Island



Author: Azure Giroux || Date: 2/23/2017 || Source: URI, USGS, ESRI



Legend

-  Freshwater Wetlands
-  Hydric Soils
-  No Spray Zone
-  Outbreak

In South Kingstown (RI), there has been a detected outbreak of mosquitos infected with the Equine Encephalitis pathogen. To combat the outbreak, helicopters have been commissioned to spray biotoxin in the area that encompasses sites where positive samples were obtained within the mosquitos freshwater wetlands habitat - the "outbreak zone". The cost of spraying is \$5,000/km².

However, within the outbreak zone there is a patch of rare wetland habitat that cannot be sprayed - the "no spray zone". In addition, there is a debate among the field crews over the best source of wetland data. One field of thought is that hydric soils from soils data is best, and the other field of thought is that freshwater wetlands from wetlands data is superior.

In order to appease both parties, this map includes both data sources and their appropriate total area of freshwater wetlands and cost estimates. For the soils data, the total area of freshwater wetlands within the outbreak zone is 6.32 km², with a cost estimate of \$31,600. For the wetlands data, the total area of freshwater wetlands within the outbreak zone is 7.47 km², with a cost estimate of \$37,350.