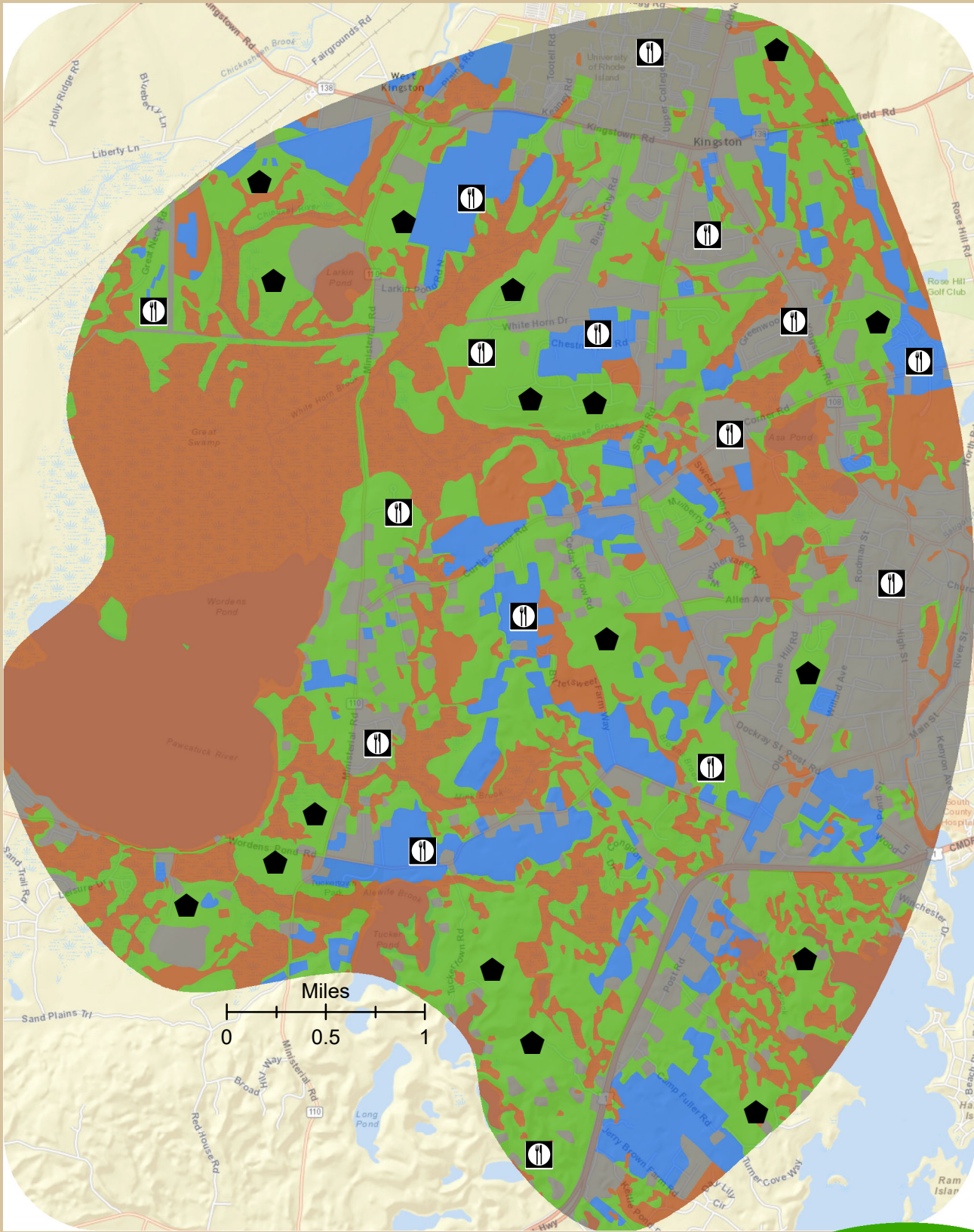








Elusive Woofing Warblers



Author: Azure Giroux || Date: 2/16/2017 || Source: RIGIS, URI, USGS, ESRI



Sites & Habitat Types

Legend	 Feeding	 Built
	 Nesting	 Cleared
		 Preferred
		 Unsuitable

This map shows the habitat types of Woofing Warblers:

- (1) Built, 162 discrete patches, 1218.56 hectares (ha)
- (2) Cleared, 80 discrete patches, 619.34 ha
- (3) Preferred, 148 discrete patches, 1767.14 ha
- (4) Unsuitable, 185 discrete patches, 2038.97 ha

From the data, we are able to identify patterns and establish in which habitats Woofing Warblers prefer to nest (preferred) and feed (built and cleared).