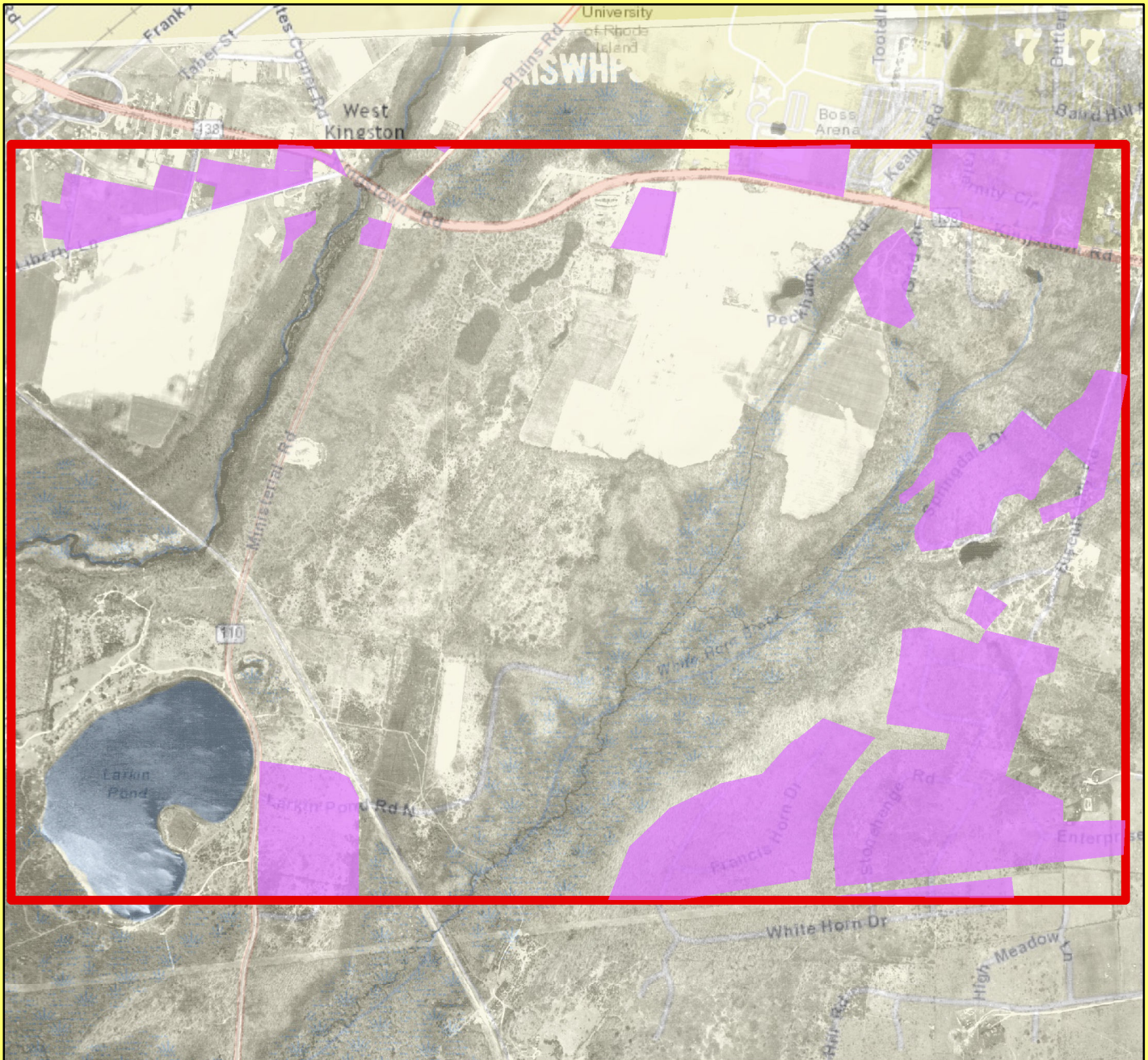
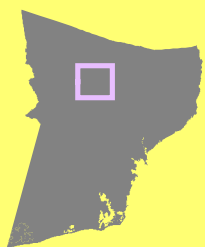




Where, Oh Where, Have Our Farmlands Gone?



The purpose of this map is to estimate the extent of areas that have been converted from farm or forest to residential land use between 1939 and 1997 in the Larkins Pond region of South Kingstown, Rhode Island (outlined in red). This map shows regions that have experienced residential growth within that time frame. In total, there have been approximately 182.96 acres that have been converted from farm or forest land to residential land since 1939.



Legend

-  Residential Area
-  Study Area

