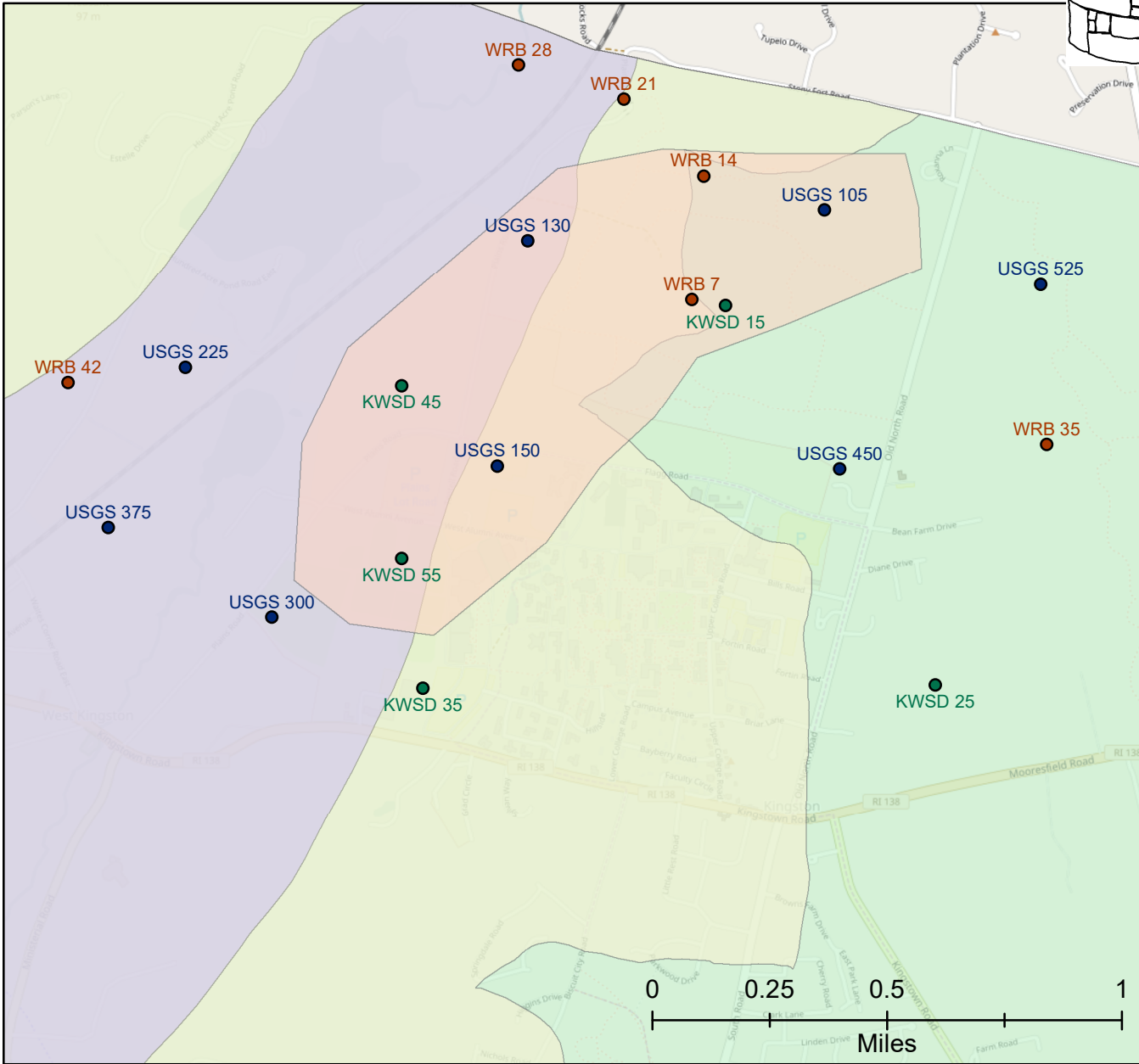
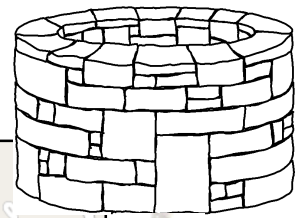


Well, That's Swell!



This map displays a collection of test wells drilled to evaluate potential ground water yields in the Kingston, RI area. In addition, groundwater aquifers, groundwater recharge areas, and an area of special concern (1.85 hectares) for land uses that might pollute groundwater are included.

Test well location sites were provided by the United States Geological Survey (USGS), RI Water Resources Board (WRB), and Kingston Water Supply District (KWSD).

Legend

- Groundwater Zone of Concern
- Groundwater Aquifers
- Groundwater Recharge Areas

