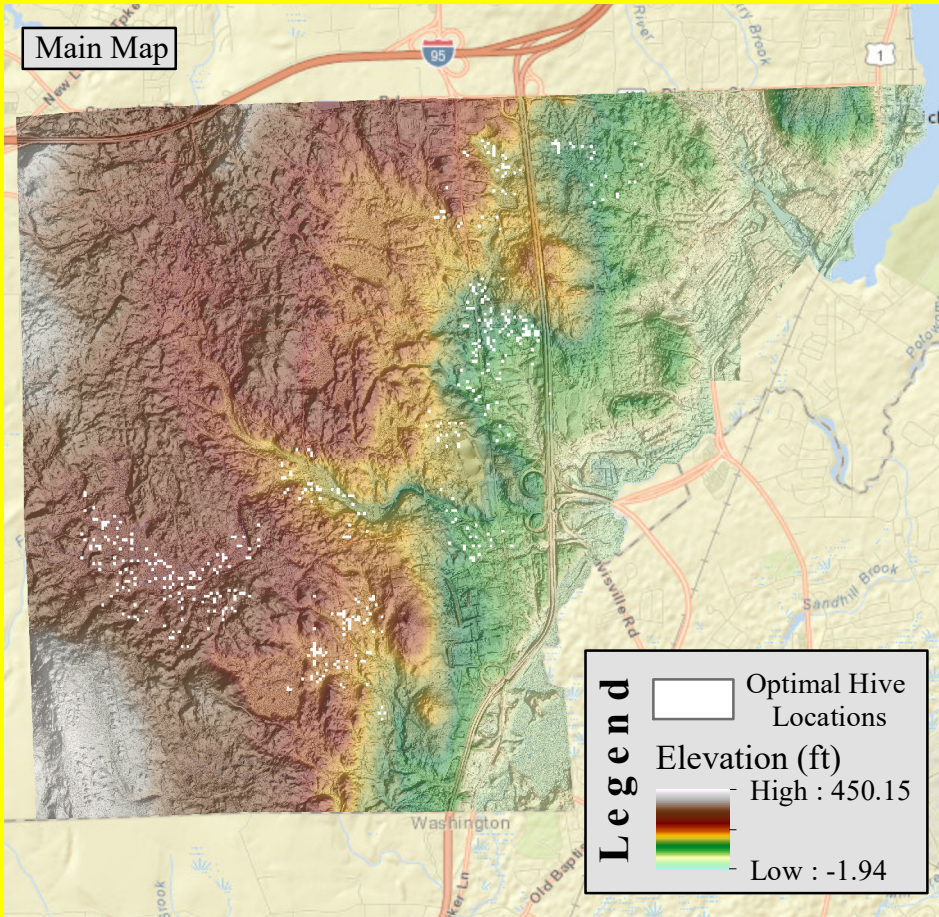


# The Bees Knees

## East Greenwich, Rhode Island

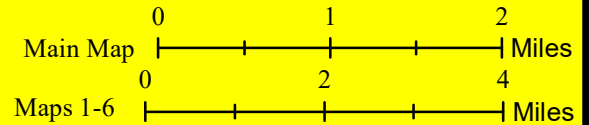


The "Main Map" demonstrates the most ideal locations in East Greenwich, RI to keep managed beehives, meeting the criteria of all six maps below. Total, there are .12 acres, or 5,077.96 square feet most suitable for placing honey bee colonies in town. In addition, this map displays a shaded relief map of the area.

The criteria used to determine best hive locations were:

- ~ "Spill Zone" score < 2 (Map 1)
- ~ High habitat diversity (Map 2)
- ~ Within 500ft of a river (Map 3)
- ~ Elevation 100ft-300ft (Map 4)\*
- ~ Slope < 3 degrees (Map 5)
- ~ South facing 150-210 degrees (Map 6)

\* Map 4 also includes contour lines at 50ft (green), 100ft (yellow), 200ft (yellow), and 300ft (blue) elevations.



Author: Azure Giroux || Date: 5/2/2017 || Source: URI, ESRI, USGS

