

# Plant Here, Save the Bees

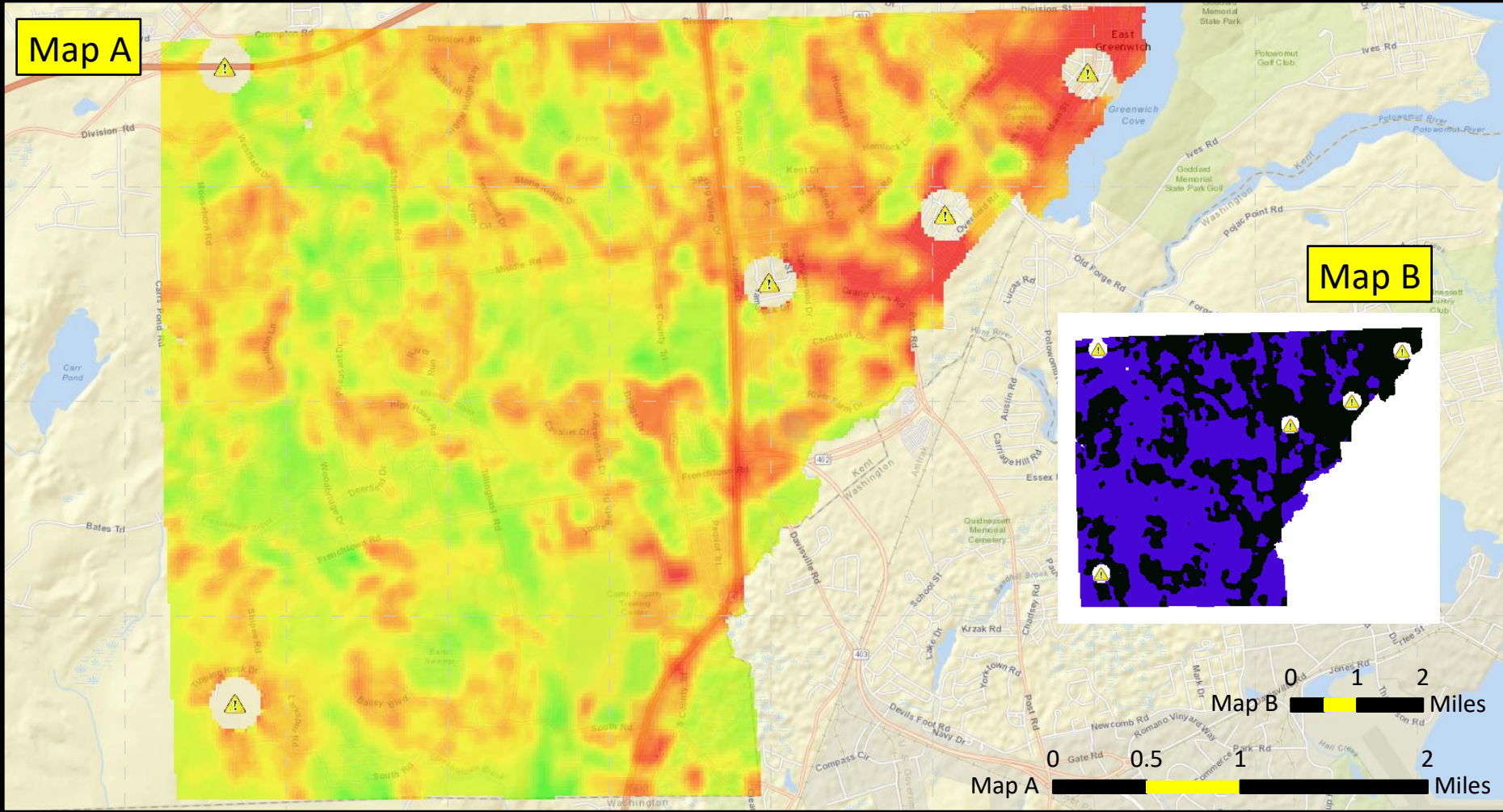
## East Greenwich, Rhode Island



71°33'0"W    71°32'0"W    71°31'0"W    71°30'0"W    71°29'0"W    71°28'0"W    71°27'0"W    71°26'0"W    71°25'0"W

Map A

Map B



Author: Azure Giroux || Date: 5/1/2017 || Source: URI, USGS, ESRI, RIGIS

Map A demonstrates areas in East Greenwich, RI most suitable for planting pollinator friendly flora and fauna.

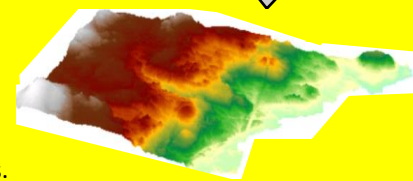
The criteria used to determine ideal planting areas are as follows:

- (1) Undeveloped Land (1 pt)
- (2) Wetlands (2 pts)
- (3) Forest/Brushland/Orchards/Cropland (2 pts)
- (4) Elevation > 125 ft (1 pt)
- (5) Good Soil (3 pts)
- (6) Low Road Density (1 pt)

In addition, lands within a 1000ft radius of a chemical spill zone are excluded.

Areas with a score above the average value (3.85) are shown in Map B. In total, these areas cover 5,476.79 acres.

This is a 3D elevation image of East Greenwich, magnified 15x.



**Legend**

- Spills
- Suitability Score**
- High : 10
- Low : 0
- Score <= 3.85
- Score > 3.85