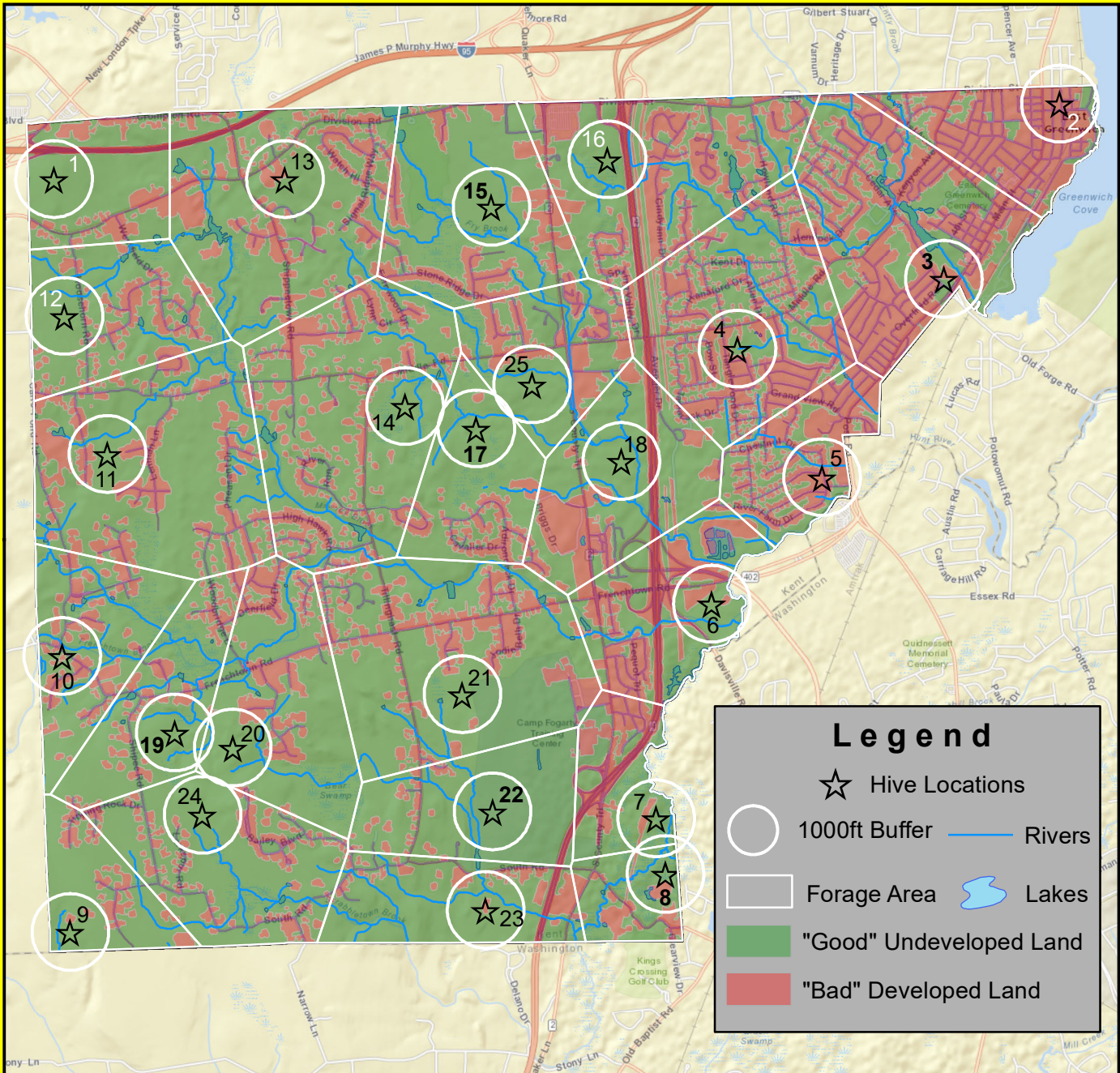


Honey, Bee the Best

East Greenwich, Rhode Island



Legend

- ☆ Hive Locations
- 1000ft Buffer
- ▭ Forage Area
- "Good" Undeveloped Land
- "Bad" Developed Land
- Rivers
- Lakes

This map demonstrates 25 locations of registered bee hives in East Greenwich, RI.

The Rhode Island Beekeepers Association wants to determine which of the current hives are in the best location, and which should be moved elsewhere.

Five variables were considered:

1. Close to rivers
2. Close to lakes
3. Far from roads
4. Large forage area
5. Large area of "good" land within 1,000' of a hive

From these variables, a site quality index was developed that identifies the 6 best and 4 worst hive locations. Results can be seen in the table below.

Hive ID	Feet to River	Feet to Lake	Feet from Road	"Good" Acres ¹	Forage Acres	Quality Index ²
1	2074.76	2653.74	688.45	57.49	279.64	0
2	4036.57	4153.53	32.64	6.56	272.42	0
3	392.07	834.18	140.39	25.54	610.81	3
4	0.00	608.39	301.89	28.41	592.73	2
5	292.72	2653.50	49.77	18.46	255.19	1
6	473.91	1139.04	521.90	44.13	358.95	1
7	388.84	1800.24	1438.96	46.54	205.51	2
8	406.01	492.33	1208.41	42.71	142.89	3
9	312.56	5099.77	1219.52	43.81	210.29	2
10	228.87	1202.99	118.69	39.21	324.26	1
11	460.00	1200.12	477.43	51.62	696.50	2
12	536.22	1933.07	499.80	65.66	351.73	0
13	1865.12	2032.96	548.05	57.60	670.53	1
14	386.50	1093.31	927.54	66.02	717.43	2
15	401.43	1789.23	1180.42	67.81	497.40	3
16	569.98	2774.01	450.07	58.83	568.55	0
17	314.57	1643.18	1828.76	68.52	294.36	3
18	409.60	1068.21	767.63	62.22	424.54	1
19	417.86	1324.96	1027.35	68.02	319.40	3
20	527.90	1517.86	1001.53	67.20	456.32	1
21	613.43	541.49	725.43	65.84	736.28	2
22	469.38	964.40	1203.00	72.09	356.15	4
23	436.27	1087.30	990.72	64.23	323.29	1
24	415.29	2822.61	698.32	67.22	460.09	2
25	357.05	1728.53	891.25	63.70	308.37	1

¹ Acres of land that is beneficial to bees (e.g. forest) within 1,000' of a hive
² A score of 5 is the best, 0 is the worst

One point was given for the following criteria:

- (A) Hive within 500ft of a river; bees need water
- (B) Hive within 500ft of a lake; bees need water
- (C) Hive >1000ft from road; away from civilization is ideal
- (D) Top 5 hives with most "good" acreage; more pollen
- (E) Top 5 hives with most forage acres (determined by proximity to other hives); less competition for pollen

